



Manufacturing Quality Compatibles for Customers Worldwide



Chemical Toner for use in KONICA MINOLTA Bizhub C224/284/364



OEM-PN: A33K130 (K)	A33K430 (C)
A33K330 (M)	A33K230 (Y)
CET-PN: CET7341K (K)	CET7341C (C)
CET7341M (M)	CET7341Y (Y)

Product Specifications (equivalent to OEM)

Weight: 544g (K)	514g (C)
514g (M)	514g (Y)

Yield: 27,000 (K) 25,000 (C,M,Y)

Country of Origin: Japan (toner)

9 Pcs per master carton

315 Pcs/Sea Pallet 225 Pcs/Air Pallet

*Actual yields may vary depending on machine application, machine usage and usage conditions.

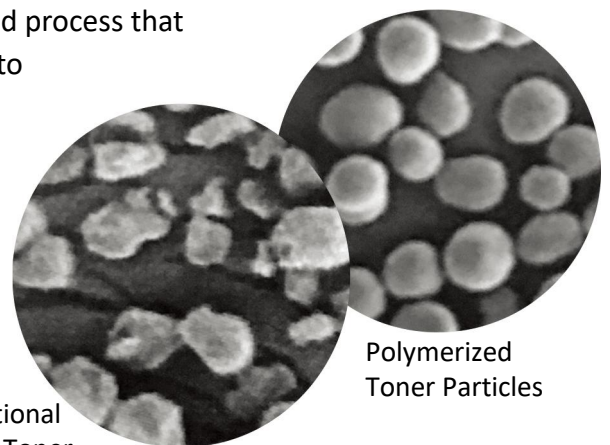
Product Highlights and Benefits

- Tested and approved to be equivalent to OEM in image quality, yield and fusing properties
- Chemical/polymerized manufactured toner to match OEM performance and quality
- Trickle feed blended toner maintains consistent image quality over product life
- Fully compatible with OEM toners
- Improve profitability with OEM-like quality at lower costs

Benefits of Chemical Polymerized Toner

Chemical polymerized toner is produced through a specialized process that creates smaller and more uniform particles when compared to conventional pulverized toners. The small, uniform toner particles produce a higher image quality with fine lines, sharp text and smooth color gradients. These toners work well with different paper weights and coating types often used for graphic imaging.

Polymerized toners are more energy efficient to produce and the ingredients used to make them can be recycled back into the production process minimizing waste and cost.



Traditional Resin Toner

Polymerized Toner Particles

CET Group Co., Ltd.

Tel: 8610-81515555 www.cetgroupco.com E-mail: sales@cetgroupco.com

DRUM UNIT SECTION

<p>DR512K Black Drum Unit, A2XN0RD B1044, CET7368U, 130K</p>	<p>DR512 Color Drum Unit, A2XN0TD B1045, CET7369U, 90K</p>	<p>Long Life OPC Drum, DR311-Drum, CET7059, 130K</p>	<p>Long Life OPC Drum W/Silencer, DR311-Drum, CET101015, 130K</p>
			
<p>Drum Cleaning Blade, DR512-Blade, CET7016</p>	<p>Charge Corona Unit, CET7054</p>	<p>Drum Chip, DR-313K DR-512K, CET8200N, 120K</p>	<p>Drum Chip, DR-313 DR-512, CET8207N, 75K</p>
			
<p>DV512M Developer (OEM), A2XN0ED, CET8127, 590K</p>	<p>DV512Y Developer (OEM), A2XN08D, CET8128, 590K</p>	<p>DV512K Developer (OEM), A2XN03D, CET8125, 590K</p>	<p>DV512C Developer (OEM), A2XN0KD, CET8126, 590K</p>
			
<p>Developer Chip W/Holder, CET7179</p> 			

DRUM UNIT SECTION

<p>TN-321K Toner Cartridge-Chemical, A33K130, CET7341K, 27K</p>	<p>TN-321C Toner Cartridge-Chemical, A33K430, CET7341C, 25K</p>	<p>TN-321M Toner Cartridge-Chemical, A33K330, CET7341M, 25K</p>	<p>TN-321Y Toner Cartridge-Chemical, A33K230, CET7341Y, 25K</p>
			
<p>TN-321K Toner Cartridge, A33K130, CET7262, 27K</p>	<p>TN-321C Toner Cartridge, A33K430, CET7263, 25K</p>	<p>TN-321M Toner Cartridge, A33K330, CET7264, 25K</p>	<p>TN-321Y Toner Cartridge, A33K230, CET7266, 25K</p>
			
<p>544g Bottle Toner, NF6-K (With Carrier), CET8521K2004</p>	<p>514g Bottle Toner, NF6-C (With Carrier), CET8521C2004</p>	<p>514g Bottle Toner, NF6-M (With Carrier), CET8521M2004</p>	<p>527g Bottle Toner, NF6-Y (With Carrier), CET8521Y2004</p>
			
<p>Bulk Black Toner, NF6K, CET8521K</p>	<p>Bulk Color Toner, NF6C, CET8521C</p>	<p>Bulk Color Toner, NF6M, CET8521M</p>	<p>Bulk Color Toner, NF6Y, CET8521Y</p>
			
<p>Bulk Carrier, NF6CR, CET8521D</p>		<p>Waste Toner Container, WX-103 A4NNWY1, CET7114</p>	
			

FUSER SECTION

Fuser Belt, A161R71811-Film , CET7014	Fuser Belt (OEM), A7PUR70300-Film , CET311007	Lower Sleeved Roller, A161R71811-Lower , CET7015
		

TRANSFER BELT AND ROLLERS

Transfer Belt Assembly, A161R71300 , CET7123	Transfer Belt Assembly, A161R71300 , CET7163	Transfer Belt (Japan), CET321024	Transfer Belt (Japan), CET7119
			
Transfer Belt Cleaning Blade, CET7056	Pickup/Feed/Separation Roller-PU, A00J-5636-00 , CET7017	Pickup/Feed/Separation Roller-PU (Red), A00J-5636-00 , CET6635	Paper Pickup Roller, A5C1562200 , CET7149
			